










Pool Leg Kit Installation Instructions

What's included:

 x2	Cross brace  x1	Thumb-screws  x6
	Locking braces  x2	5/16" Bolts  x6
	Allen wrench  x1	5/16" locking nuts  x6

You'll need:

Drill with 5/16" drill bit* 
5/16" wrench or pliers 
Utility knife or scissors (opt.) 

*If your ramp came with threaded inserts, you'll also need a 1/4" bit

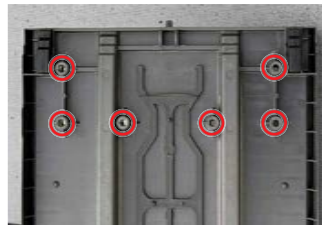
Let's get your pool ramp set up so your pup can make a splash safely!

Ramp Drilling Instructions

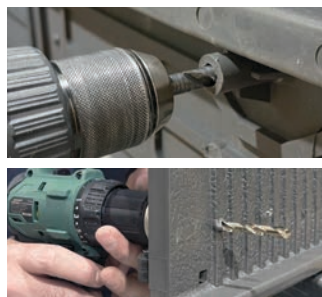
1. Unfold your PetStep ramp and turn it on its side, keeping it slightly bent for stability.



2. On the **underside** of the ramp at the bottom, locate the six insert shaft points. There are three on the left and three on the right (six total).



3. Use a **5/16" bit** in your drill and insert it into a shaft opening. Drill through the ramp. Repeat for each hole. If the bit is unable to fit in the shaft because of a metal insert, use a 1/4" bit instead.



4. Starting from the top surface of the ramp, drill through the six holes again with the 5/16" bit to ensure a clearer path for the **bolts**. If there are metal inserts, be sure to drill them out using the 5/16" bit so the bolts will fit.



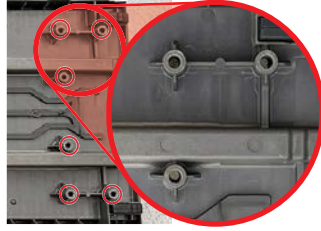
5. There will be some loose rubber around the new holes. Pull back the rubber to insert the bolts or use a **utility knife or scissors** to trim the rubber.



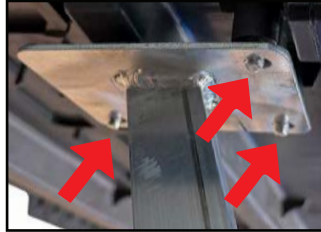
Your ramp is now ready for pool legs!

Pool Leg Installation Instructions

1. Looking at the **walking surface** of the ramp, locate the two sets of three pre-drilled holes near the ramp's bottom edge. Insert a bolt into each hole.



2. On the *underside* of the ramp, slide the holes in the **pool leg base** onto the **bolts**, making sure the pool leg is angled outward, as shown below.

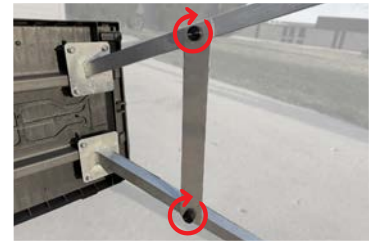
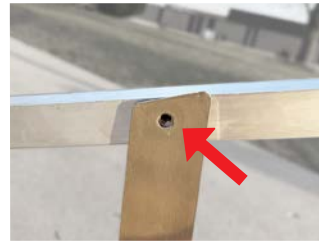
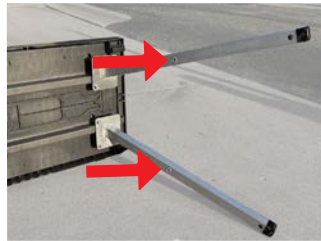


3. Place a **locking nut** on each bolt. Tighten each **bolt** using the included **Allen wrench** while holding the nut steady with a wrench or similar tool. Do not over-tighten.
4. Repeat Step 3-4 for the other **pool leg**.



Cross brace

Align the hole on each side of the **cross brace** with the threaded inserts in the middle of each pool leg. Secure using a **thumbscrew** in each hole.



Locking Brace

Place a **locking brace** over each side of the ramp's hinge, aligning holes with the threaded inserts in the ramp. Use the remaining four **thumbscrews** to secure the locking braces.



After installing the pool legs and locking braces, your PetStep ramp is ready to go in the pool! One person can put the ramp in the pool, but we recommend having someone else help you place the ramp. Lift the ramp from the ground and flip it so that the top of the ramp is facing upwards and the pool legs downwards. Place the ramp in your pool, pool legs first. Position the ramp as needed to ensure the legs are planted on the pool floor and that the rubber grips on the top of the ramp are resting securely on the edge of your pool.



For tips on getting your pup comfortable with the ramp, check out the included booklet: "5 Easy Tips for Pool Ramp Fun!" Now you can tell your pup that it's time for a swim!