



# Pool Ramp Kit Installation Instructions

Let's get your pool ramp set up so your pup can make a splash safely!

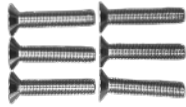
## What's included:



1 - Cross brace



1 - 3/16 Allen wrench



6 - 5/16 Bolts



6 - 5/16 Locking nuts



6 - Thumbscrews



2 - Locking braces



2 - Pool legs



1 - PetStep ramp

## You'll need:

1 - Size 5/16 Wrench or Pliers to hold the locking nuts

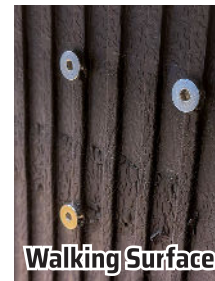
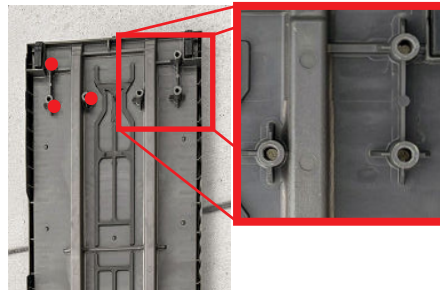


## INSTRUCTIONS:

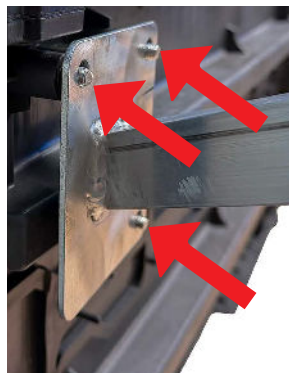
### Pool Legs

1. Unfold your PetStep ramp and turn it on its side, keeping it slightly bent for stability. This will keep both the top and underside of the ramp accessible.

2. Looking at the **walking surface** of the ramp, locate the two sets of three pre-drilled holes near the ramp's bottom edge. Insert a bolt into each hole.



3. On the *underside* of the ramp, place the 3 holes in the **pool leg** onto the 3 **bolts**, making sure the pool leg is angled outward, as shown in the cross brace section on the second page.



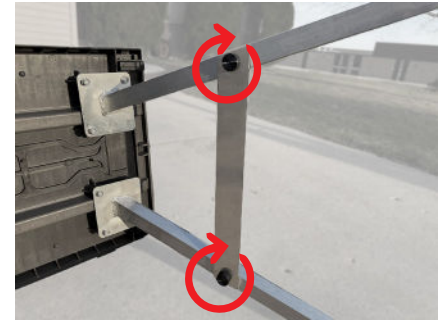
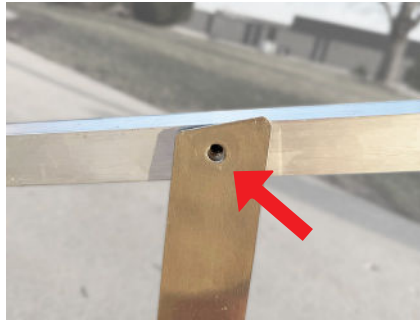
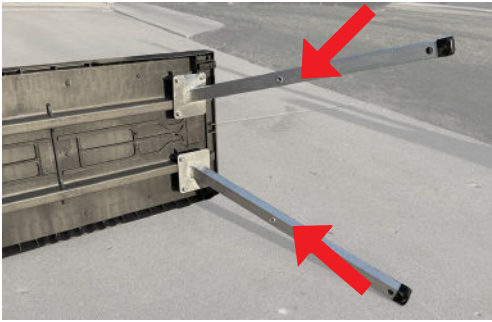
4. Turn a **Locking nut** onto each **bolt**. Secure each **bolt** using the included **Allen wrench** while holding the nut steady with a **5/16 Wrench** or **Pliers**. Fully tighten to avoid loose play.



5. Repeat Step 3-4 for the other **pool leg**.

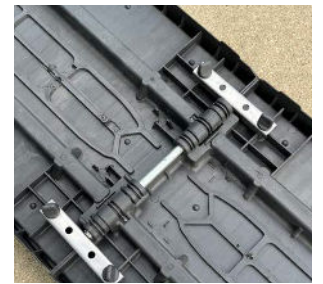
## Cross brace

Align the hole on each side of the **cross brace** with the threaded inserts in the middle of each pool leg. Secure using a **thumbscrew** in each hole.



## Locking Brace

Place a **locking brace** over each side of the ramp's hinge, aligning holes with the threaded inserts in the ramp. Use the remaining **four thumbscrews** to secure the locking braces.



After installing the pool legs and locking braces, your PetStep ramp is ready to go in the pool! One person can put the ramp in the pool, but we recommend having someone else help you place the ramp. Lift the ramp from the ground and flip it so that the top of the ramp is facing upwards and the pool legs downwards. Place the ramp in your pool, pool legs first. Position the ramp as needed to ensure the legs are planted on the pool floor and that the rubber grips on the top of the ramp are resting securely on the edge of your pool.

For tips on getting your pup comfortable with the ramp, check out the included booklet: "5 Easy Tips for Pool Ramp Fun!" Now you can tell your pup that it's time for a swim!

